

Connectivity Criteria Sub-Committee

Prepared by VITL and DVHA

Connectivity Criteria Sub-Committee



WHAT is purpose of Connectivity Criteria Sub-Committee?

1. Annually refine/update the existing Connectivity Criteria to enable the Vermont Health Information Exchange to provide services that further the goals outlined in the statewide HIE Strategic Plan.
2. Establish Connectivity Criteria to enable aggregation and management of additional data types – beyond current clinical data – including social determinants of health (SDoH), claims, women’s health, substance use and mental health data.



WHY does this work matter?

The Connectivity Criteria [required under [18 V.S.A. § 9352 \(j\)\(2\)](#)] establishes the standards for creating and maintaining connectivity to the State of Vermont’s Health Information Exchange network.

An overarching clear framework expressed through the connectivity criteria will empower data sources and data receivers to confidently share meaningful data throughout Vermont and nationwide.



HOW are we accomplishing this effort?

Currently the Connectivity criteria is aligned towards US Core Data for Interoperability ([USCDI](#)) [version 1 data set](#).

As part of the 21st Century Cures Act Final Rule, [HL7 FHIR Release 4.0.1](#) has been identified as the foundational standard to support data exchange via secure APIs and USCDI)version 1 data set for defining electronic health information (EHI).



WHEN do we expect to see outcomes?

Present to June 2020 -

- Create Tier II Connectivity Criteria for the Designated Agencies (DA) data set involving Substance Use Disorder (SUD) data.
- Develop Connectivity Criteria Subcommittee Charter and submit to HIE SC.

July 2020 to Fall 2020 -

- Review/update the existing Physical Health Connectivity Criteria for Tier II & II standards

September 2020 -

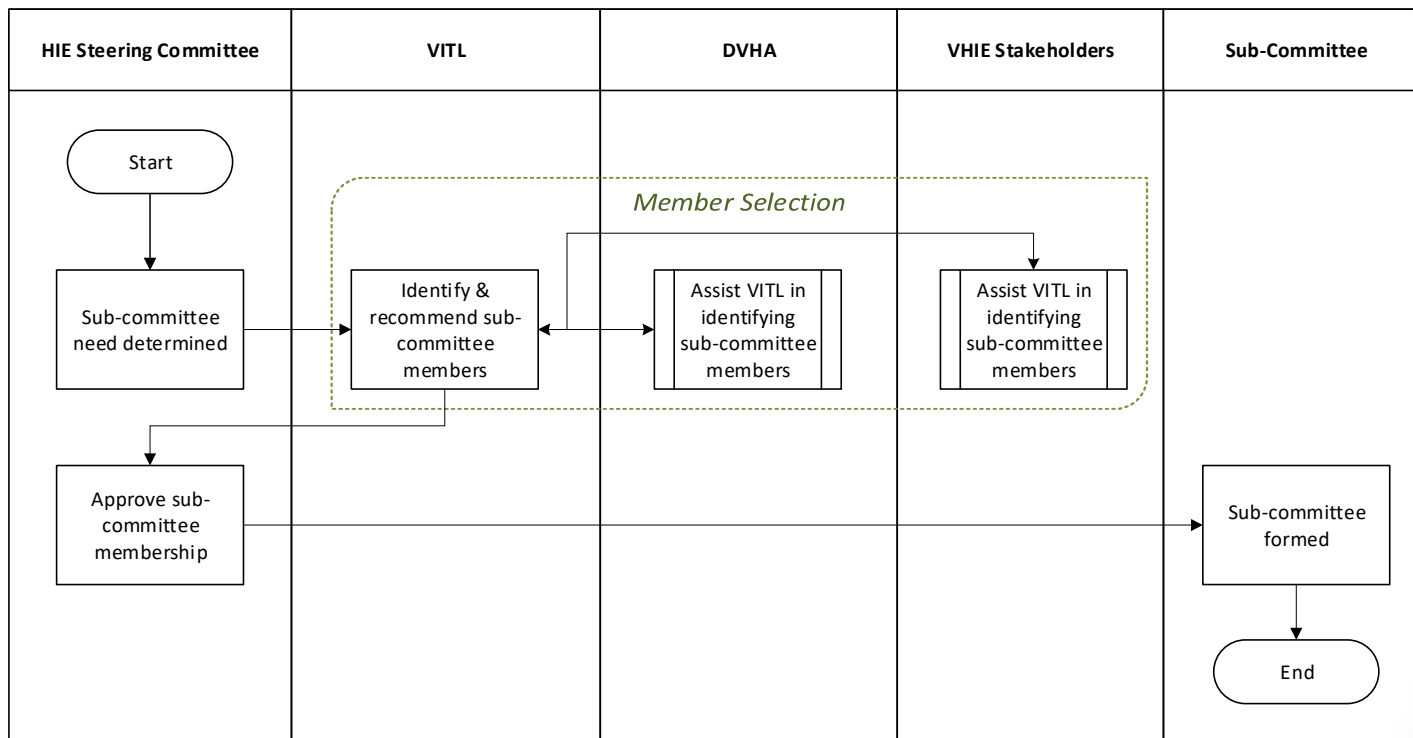
- Support presentation of annual Connectivity Criteria updates to HIE SC for review and approval (Physical and DA data types).



WHO is involved in making this work happen?

VITL
OneCare Vermont
Blueprint (DVHA)
Vermont Care Partners
Vermont Department of Health (VDH)
Green Mountain Care Board (GMCB)
Vermont Chronic Care Initiative
Bi-State Primary Care Association
HIE Program Team (DVHA)
Other groups as defined by new data types

Connectivity Criteria Sub-Committee Membership



Connectivity Criteria Sub-Committee Responsibilities

- Create recommendations on Connectivity criteria for all data type projects [Clinical/Part 2/Claims/SDoH] in line with currently established industry and federal standards and protocols.
- Participate in annual and new data type Connectivity criteria reviews and creation.
- Provide input for their programs and relevant data types into the process.
- Help communicate the recommendations to the HIE Steering Committee